

Push-Fit Waste Systems BS EN 1451-1:2000/BS 5254:1976

Made in polypropylene, this quick and easy to install waste system incorporating a push-fit ring seal system is available in 32mm, 40mm and 50mm sizes. No solvent welding required.



3m Wastepipe

CODE	SIZE
WP01	32mm
WP02	40mm
WP03	50mm

Straight Coupling

CODE	SIZE
WP07	32mm
WP08	40mm
WP09	50mm

90° Bend

CODE	SIZE
WP10	32mm
WP11	40mm
WP12	50mm

92½° (87½°) Bend

CODE	SIZE
WP14	32mm
WP15	40mm
WP16	50mm

135° (45°) Bend

CODE	SIZE
WP18	32mm
WP19	40mm
WP20	50mm

Tee

CODE	SIZE
WP22	32mm
WP23	40mm
WP24	50mm

50mm: Grey only ○ ● ●
White Black Grey

90° Conversion Bend

CODE	SIZE
WP26	32mm
WP27	40mm

Socket Plug

CODE	SIZE
WP30	32mm
WP31	40mm
WP32	50mm

Pipe Clip

CODE	SIZE
WP34	32mm
WP35	40mm
WP36	50mm

Reducer

CODE	SIZE
WP38	40x32mm
WP39	50x32mm
WP40	50x40mm

Tank Connector

CODE	SIZE
WP60	32mm
WP61	40mm

PVC-U Solvent Waste System BS EN 1329 - 1 - 2000/BS 5255:1996

This extremely durable solvent weld system is unaffected by ultra violet light, provides resistance to most inorganic acids and alkalis and is specifically formulated to be resistant to boiling water and will not support combustion.



3m Wastepipe

CODE	SIZE
MUO1	32mm
MUO2	40mm
MUO3	50mm

Straight Coupling

CODE	SIZE
MUO7	32mm
MUO8	40mm
MUO9	50mm

90° Bend

CODE	SIZE
MU10	32mm
MU11	40mm
MU12	50mm

92½° (87½°) Bend

CODE	SIZE
MU14	32mm
MU15	40mm
MU16	50mm

135° (45°) Bend

CODE	SIZE
MU18	32mm
MU19	40mm
MU20	50mm

Tee

CODE	SIZE
MU22	32mm
MU23	40mm
MU24	50mm

●
Olive Grey

90° Conversion Bend

CODE	SIZE
MU26	32mm
MU27	40mm
MU28	50mm

Access Plug

CODE	SIZE
MU30	32mm
MU31	40mm
MU32	50mm

Pipe Clip

CODE	SIZE
MU34	32mm
MU35	40mm
MU36	50mm

Reducer

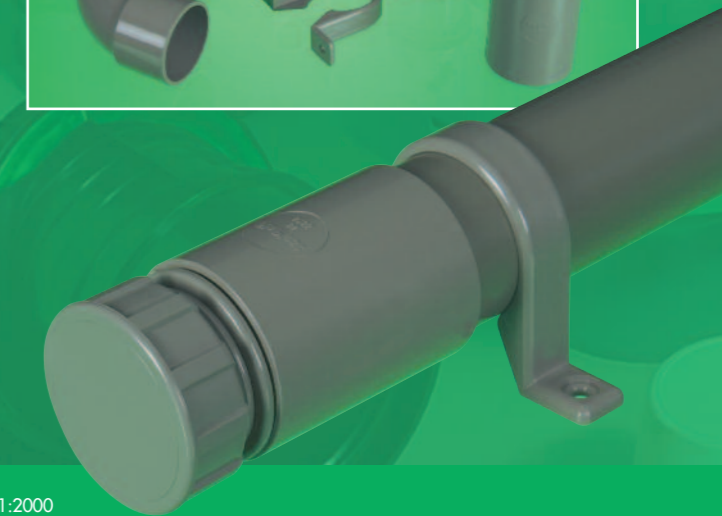
CODE	SIZE
MU38	40x32mm
MU39	50x32mm
MU40	50x40mm

92½° (87½°) Cross Tee

CODE	SIZE
MU58	40mm
MU59	50mm

Tank Connector

CODE	SIZE
MU60	32mm
MU61	40mm



Unicom Compression Waste System BS 5254, BS EN 1451-1:2000

Made in polypropylene, this quick and easy to install waste system incorporating a compression outlet that accepts plastic and copper pipes. Available in 32mm and 40mm sizes. No solvent welding required.



○
White

3m Wastepipe

CODE	SIZE
WPO1	32mm
WPO2	40mm

Straight Coupling

CODE	SIZE
WC07	32mm
WC08	40mm

90° Bend

CODE	SIZE
WC10	32mm
WC11	40mm

0-90° Adjustable Bend

CODE	SIZE
WC14	32mm
WC15	40mm

135° (45°) Bend

CODE	SIZE
WC18	32mm
WC19	40mm

Tee

CODE	SIZE
WC22	32mm
WC23	40mm

90° Conversion Bend

CODE	SIZE
WC26	32mm
WC27	40mm

Reducer

CODE	SIZE
WC38	40x32mm

Flex-Tube

CODE	SIZE
FT32	32mm
FT40	40mm

Make your life easier with the FloPlast 0-90° adjustable waste bend, the one fitting that will get you out of a tight spot.



0-90° ADJUSTABLE BEND